

NEW PRODUCT GUIDE

WORKSTATIONS | SEATING | STORAGE | ACCESSORIES

SHARP
OFFICE



2024/2025

Contents

CHAIRS	
Operator Chairs	4
Executive Chairs	5
Breakout Chairs	6-7
Lounge Chairs	8-9
NEW Pixel Range	10-11
TABLES	
Side Tables	12
Coffee & General Purpose Tables	13-14
Drum Base Tables	15
WORKSTATIONS	
Boost Crank Range	16-19
Deluxe Infinity 120° Pods	20
ACCESSORIES	21-23
NEW BLACK FINISHES	24-27

2024 New Products

Welcome to the 2024 New Product Guide, where we unveil our latest release of ergonomic workstations, chairs, tables and workstation accessories, designed to enhance comfort and functionality in your workspace.

Introducing the Boost Crank, a manual height adjustable workstation complementing the Boost+ range, offering an affordable customisable solution for your workspace. Explore our new 120-Degree Workstation Pods, which offer a unique layout to maximise efficiency and promote collaboration in the modern office. Also discover our new Pixel range featuring high bar stools, sled base chairs, and swivel chairs, adding a touch of style and versatility to your meeting and breakout areas.

Brand new operator chairs, breakout chairs and lounges have been added to the range, as well as various tables and workstation accessories.





LOTTO MB BLK/BL



LOTTO HEADR BL



LOTTO MB WH/GY



LOTTO HEADR WH

LOTTO

MEDIUM BACK MESH CHAIR

Specifications:

Overall Size	685W x 580-660D x 950-1040H
Seat Size	500W x 480D
Seat Height	430-530H
Weight Rating	135kg

Features:

- Height adjustable mesh operator chair
- Synchro mechanism with gas lift, back rest and seat pan tilt
- Available in two colours: black frame with black fabric seat and black/ grey weave mesh back, or white frame with grey fabric seat and grey/ white weave mesh back
- Seat slide and lumbar support
- Polypropylene and fibreglass mix frame
- 5 star base on castors
- Includes removable adjustable arms
- Mesh back and fabric seat
- Headrest available in black or white
- At full extension, the headrest can add an additional 280mm to the overall height of the chair
- GreenGuard GOLD certified
- 5 year warranty



MIRAGE MB GBL



MIRAGE HB GBL



MIRAGE

MEDIUM BACK EXECUTIVE CHAIR

Specifications:

Overall Size	700W x 700D x 960-1020H
Seat Size	520W x 490D
Seat Height	440-500H
Weight Rating	120kg

HIGH BACK EXECUTIVE CHAIR

Specifications:

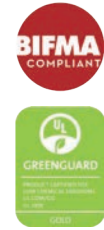
Overall Size	700W x 700D x 1140-1200H
Seat Size	535W x 490D
Seat Height	440-500H
Weight Rating	120kg

Features:

- Seat and back rest upholstered in soft genuine black leather
- 700mm Diameter polished aluminium/black 5 star base on castors
- Easy adjust tilt tension control
- Heavy duty tilt mechanism
- Fixed height aluminium arm rest finished in hard wearing black vinyl
- 10 year warranty



NEW BREAKOUT CHAIRS



HERA AMB

HERA

HERA BREAKOUT CHAIR

Specifications:

Overall Size	640W x 570D x 780H
Seat Size	550W x 510D x 465H
Weight Rating	135kg

Features:

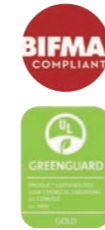
- Breakout and dining chair that adds style and comfort to seating areas
- Built for comfort, durability and longevity, perfect for daily use
- Back rest with steel inner frame
- Seat pan with Polywood inner
- Moulded foam seat and back rest
- Robust steel 4 leg base
- Leather finish in Amber PU or French Navy PU
- Base finished in black powdercoat
- Greenguard GOLD certified
- BIFMA tested
- 5 year warranty



HERA FN

Finishes:

NEW BREAKOUT CHAIRS



NYX FN



NYX AMB

NYX

NYX BREAKOUT CHAIR

Specifications:

Overall Size	490W x 520D x 760H
Seat Size	470W x 470D x 470H
Weight Rating	120kg

Features:

- Robust steel 4 leg frame finished in black powdercoat
- Leather finish in Amber PU or French Navy PU
- Moulded foam seat and back rest
- Greenguard GOLD certified and BIFMA tested
- 5 year warranty

Finishes:



EROS AMB



EROS FN

EROS

EROS BREAKOUT CHAIR

Specifications:

Overall Size	530W x 580D x 830H
Seat Size	490W x 435D x 445H
Weight Rating	120kg

Features:

- Robust steel 4 leg frame finished in black powdercoat
- Leather finish in Amber PU or French Navy PU
- Moulded foam seat and back rest
- Greenguard GOLD certified
- 5 year warranty

Finishes:



MYK OLIVE



MYK LG

MYK

SINGLE LOUNGE CHAIR

Specifications:

Overall Size 650W x 710D x 800H
 Seat Size 630W x 480D x 430H
 Weight Rating 135kg

Features:

- Available in Light Grey or Olive Green fabric
- Black leather feature strap
- Back rest height: 370mm
- Quality commercial grade fabric
- 5 year warranty

Finishes:  

CALYPSO


WING BACK LOUNGE CHAIR

Specifications:

Overall Size 800W x 800D x 1080H
 Seat Size 535W x 510D x 420H
 Weight Rating 150kg

Features:

- Wing back lounge chair in Light Grey fabric
- White Ashwood timber base with clear coloured anti-scratch treatment
- Quality commercial grade fabric
- Back rest height: 660mm
- 5 year warranty

Finish: 



CALYPSO LG



LUTIE CLUB OLIVE



LUTIE

LUTIE CLUB LOUNGE CHAIR

Specifications:

Overall Size 755W x 730D x 760H
 Seat Size 570W x 515D x 425H
 Weight Rating 135kg

Features:

- 4 star base breakout lounge chair
- Solid steel 4 leg leaf base finished in black powdercoat
- Moulded foam seat and backrest
- Backrest with steel inner frame
- Quality commercial grade fabric in Olive
- 5 year warranty

Finishes: 



LUTIE CROSS RUST



LUTIE CROSS LOUNGE CHAIR

Specifications:

Overall Size 755W x 730D x 760H
 Seat Size 570W x 515D x 425H
 Weight Rating 135kg

Features:

- Cross base breakout lounge chair
- Solid steel loop rod cross base finished in black powdercoat
- Moulded foam seat and backrest
- Backrest with steel inner frame
- Quality commercial grade fabric in Rust
- 5 year warranty

Finishes: 



PIX5STAR AMB/BL



PIX5STAR LI/BL



PIX5STAR FN/WS



PIX5STAR-WA FN/WS

PIXEL

PIXEL SWIVEL CHAIR

Specifications:

Overall Size 630W x 630D x 830-875H
 Seat Size 450W x 420D x 470-515H
 Weight Rating 120kg

Features:

- New 5 star base with gas strut
- Breakout and meeting chair
- Height adjustable swivel chair
- Fabric or leather upholstery
- Ribbed stitching detail
- Available in Light Grey fabric, Amber PU, or French Navy PU
- Solid timber inner frame with foam overlay
- Swivel base finished in black or white powdercoat
- Gas lift height stroke: 45mm
- Arms available for additional cost, finished in black or white powdercoat to match base
- 5 year warranty



PIXSTOOL73 AMB/BL



PIXSTOOL73 LI/WS



PIXSLED FN/BL



PIXSLED AMB/WS

PIXEL

PIXEL BAR STOOL

Specifications:

Overall Size 525W x 535D x 945H
 Seat Size 440W x 390D x 730H
 Weight Rating 110kg

Features:

- Seat pan with ribbed stitching detail
- Available in Light Grey fabric, Amber PU, or French Navy PU
- Sled base with foot rail finished in black or white powdercoat
- 5 year warranty

PIXEL SLED BASE CHAIR

Specifications:

Overall Size 550W x 550D x 790H
 Seat Size 450W x 420D x 440H
 Weight Rating 120kg

Features:

- Seat pan with ribbed stitching detail
- Available in Light Grey fabric, Amber PU, or French Navy PU
- Sled base underframe with linking abilities
- Frame in black or white powdercoat
- 5 year warranty



NEW SIDE TABLES

NEW COFFEE TABLES



NIDO-ST5400.635 BL/B



NIDO
SIDE TABLE

Specifications:
Overall Size 400 Diameter x 635H

- Features:**
- Black melamine E0 Enviroboard table top
 - Black powdercoat cross brace underframe
 - Adjustable leveling feet
 - 5 year warranty

Finish: 



NIDO-CTL800.435 BL/B



NIDO-CTM600.308 BL/B

NIDO
NIDO ROUND COFFEE TABLE

Specifications:
NIDO-CTL800.435 800 Diameter x 435H
NIDO-CTM600.308 600 Diameter x 308H

- Features:**
- Black melamine E0 Enviroboard table top
 - Black powdercoat cross brace underframe
 - Adjustable leveling feet
 - Pair both sizes to create nesting tables
 - 5 year warranty

Finish: 



SST5634 BLK/BL



SST5634 NO/WS

SELENE
SIDE TABLE

Specifications:
Overall Size 560W x 340D x 600H
Oval Base Plate 500W x 280D

- Features:**
- Black or White powdercoat underframe
 - E0 Enviroboard melamine surface
 - Tops available in Natural White, Natural Oak and Black
 - 5 year warranty

Top Finishes:    Base Finishes:  



NID01206 BL/BLK

NIDO OVAL COFFEE TABLE

Specifications:
Overall Size 1200W x 681D x 375H
Lower Surface 1200W x 500D x 300H
Upper Surface 750W x 200D x 375H

- Features:**
- Sleek all-black design
 - Black melamine E0 Enviroboard table top
 - Black powdercoat cross brace underframe
 - Black powdercoat elevated feature console for more surface area
 - Adjustable leveling feet
 - 5 year warranty

Finish: 



KST500-587 NO/WS



KOLO

COFFEE & SIDE TABLES

Specifications:
 KST500-457 500 Diameter x 457H
 KST600-457 600 Diameter x 457H
 KST500-587 500 Diameter x 587H
 KST600-587 600 Diameter x 587H

Features:

- Pair both heights to create nesting tables
- Sturdy 4 leaf cross base finished in black or white powdercoat
- E0 melamine board available in Black, Natural White and Natural Oak
- 5 year warranty

Top Finishes: Base Finishes:



BTR1500 NO/BL-BK



TTR1500 NW

TYPHOON

TYPHOON ROUND TABLE

Specifications:
 Overall Size 1500 Diameter x 750H

Features:

- E0 melamine top in Natural White or Natural Oak
- New 4 star base with foot rest bar
- 5 year warranty

Top Finishes: Base Finishes:



DBT900 BLK/BL



DBT1200 NO/WS

DRUM TABLES

DRUM BASE TABLES

Specifications:
 DBT900 900 Diameter x 730H
 DBT1200 1200 Diameter x 730H

DRUM BASE HIGH TABLES

Specifications:
 DB-HBT600 600 Diameter x 1050H
 DB-HBT900 900 Diameter x 1050H

Features:

- Matching drum base round table and high table
- Includes 20mm self tapping wood screws for table top fixing
- Adjustable leveling feet
- 25mm T E0 rated melamine top
- Drum base finished in chip resistant white or black powdercoat
- Tops available in Black, Natural White, Natural Oak, Beech and Cherry
- Mix and match top and frame colours to suit any office space
- 5 year warranty



DB-HBT900 BLK/WS



DB-HBT600 NO/BL

Top Finishes: Base Finishes:

BOOST CRANK

FLIP-TOP TABLE

Specifications:

BCFTT1575	1500W x 750D x 725-1070H
BCFTT1875	1800W x 750D x 725-1070H
BCFTT189	1800W x 900D x 725-1070H

Features:

- Manual height adjustable flip-top table
- Side winder crank handle
- Max speed: 15mm per second (10mm per full turn circle)
- Heavy duty castors - 2x locking castors & 2x non-locking castors
- Tops available in Natural White, Natural Oak, Cherry and Beech
- 25mm T E0 rated melamine top
- Underframe finished in black or white powdercoat
- Foot size of 650mm
- Column size of 65x65mm
- Easy storage when not in use
- 5 year warranty



BCFTT189 NO/BL



BCFTT1575 NW/BL



BCFTT189 NW/WS



BCFTT1575 B/WS



BOOST CRANK

SINGLE WORKSTATION

Specifications:

Overall Size	750D x 705-1155H
Available Widths	1200mm, 1500mm, 1800mm

Features:

- Manual height adjustable workstation to match Boost+ range
- Side winder crank handle
- Max speed of 15mm per second (10mm per full turn circle)
- 120kg weight lifting capacity
- Foot size of 700mm with adjustable leveling feet
- E0 rated 25mm thick table top with rigid edging and 50mm D scallop cut out to rear
- Underframe finished in black or white powdercoat
- Overall height of 1330mm when fitted with privacy screens
- 10 year warranty

Add-ons

- Fabric privacy screens available in black fabric with white frame or grey fabric with black frame
- Cable trays for cable management in black or white powdercoat to suit workstation frame
- Flexible cable snakes to carry cables from desk to cable tray
- Cable tray bridge for use between adjoining desks



BC1P1275 NO/BL



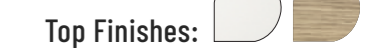
BC1PCT1275 NO/WS



BC1PWS1575 NW/BL



BC1PWSCT1875 NW/WS



BOOST CRANK

BACK TO BACK WORKSTATION



BC2P1275 NO/BL



BC2PCT1275 NO/WS



BC2PWS1575 NW/BL



BC2PWSCT1575 NW/WS

Specifications:

Overall Size 1500D x 705-1155H
Available Top Sizes 1200mm, 1500mm, 1800mm

Features:

- Manual height adjustable workstation to match Boost+ range
- Side winder crank handle on each side
- Max speed of 15mm per second (10mm per full turn circle)
- 120kg per user weight lifting capacity
- Foot size of 700mm with adjustable leveling feet
- E0 rated 25mm thick table top with rigid edging and 50mm D scallop cut out to rear
- Desk depth of 750mm per user
- Underframe finished in black or white powdercoat
- Overall height of 1330mm when fitted with privacy screens
- 10 year warranty

Add-ons

- Fabric privacy screens available in black fabric with white frame or grey fabric with black frame
- Cable trays for cable management in black or white powdercoat to suit workstation frame
- Flexible cable snakes to carry cables from desk to cable tray
- Cable tray bridge for use between adjoining desks



BOOST CRANK

CORNER WORKSTATION



BCCNR1P1515 NO/BL



BCCNRCT1P1515 NW/BL



BCCNRWS1P1815 NO/WS



BCCNRWSCT1P1818 NW/WS

Specifications:

Overall Size 750D x 705-1155H
Available Top Sizes 1500x1500mm, 1800x1500mm, 1800x1800mm

Features:

- Manual height adjustable workstation to match Boost+ range
- Side winder crank handle
- Max speed of 15mm per second (10mm per full turn circle)
- 140kg weight lifting capacity
- Foot size of 700mm for main desk and 500mm for return frame
- E0 rated 25mm thick table top with rigid edging and 80mm diameter cable entry with cover
- Underframe finished in black or white powdercoat
- Overall height of 1330mm when fitted with privacy screens
- 10 year warranty

Add-ons

- Fabric privacy screens available in black fabric with white frame or grey fabric with black frame
- Cable trays for cable management in black or white powdercoat to suit workstation frame
- Flexible cable snakes to carry cables from desk to cable tray
- Cable tray bridge for use between adjoining desks



DELUXE INFINITY

3 PERSON 120 DEGREE PODS

Specifications:

Overall Size 2866W x 2480D x 730H
 Overall Size Per User 1205W x 1205D x 730H

Features:

- Use 3 Person 120° pods to maximise office space
- Create runs of pods to suit office requirements
- Choose between Profile, Loop and Eternity leg systems
- E0 Enviroboard melamine worksurface
- Tops come with a 80mm diameter cable entry hole
- Available in black or white powdercoated underframe
- 30mm cable access void between double sided users
- Dual cross bar for added stability
- Adjustable leveling feet
- 5 year warranty

Add-ons

- Black or white infill rails to fill gaps between workstations (only available for pods without screens)
- 495mmH privacy screens upholstered in black fabric with white powdercoat frame or grey fabric with black powdercoat frame



D-IPL3P120D NO/BL



D-IEL3P120D NO/WS
with 3x D-IF12 NW



D-ILLWS3P120D NW/WS



D-IPLWS3P120D NW/BL x2

Top Finishes:



Base Finishes:



Screen Finishes:



CR1735 BL CR1735 WS

COAT STAND

KOLO COAT AND HAT STAND

Specifications:

Overall Size 500W x 500D x 1730H
 Weight Capacity 3kg per hook

Features:

- 6x foldaway hanging hooks
- Powdercoat finish with black poly foldaway hooks and top cap
- Easy 2 minute assembly
- Adjustable leveling feet
- 10 year warranty

Finish:

PEDESTAL

DELUXE 2-DRAWER HANGING PED

Specifications:

Overall Size 400W x 480D x 350H

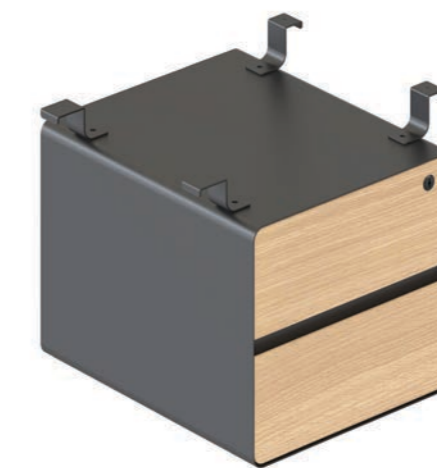
Features:

- Steel unit with melamine drawer fronts
- Designed for use with Deluxe Infinity Profile, Loop and Eternity fixed height workstations
- Available in three colour variations
- 5 year warranty

Finish:



D-HP2D NW/WS



D-HP2D NO/BL



SS-TCT WS

SS-TCT BL



B2B-TELCT1319 BL

B2B-TELCT1319 WS

TELESCOPIC CABLE TRAY

SINGLE SIDED

Specifications:

Overall Size 1300-1900W x 175D x 90H

BACK TO BACK

Specifications:

Overall Size 1300-1900W x 350D x 90H

Features:

- Telescopic cable trays for Boost+ and Halo+ workstations
- Tray extends from 1300mm to 1900mm
- Suits workstation tops with a width between 1500-2100mm
- Internal segregation for power & data
- External and internal power & data punch out provisions
- Four external punchouts at 230mm x 42mm and four internal punchouts at 230mm x 42mm
- Finished in black or white powdercoat to suit workstation frames
- Solid steel cable tray lid with 2x access holes for cable snakes
- 100mm cable infeed and outfeed hole in both ends of tray
- Steel gauge: 1.5mm used throughout
- 10 year warranty



ARCH PANEL

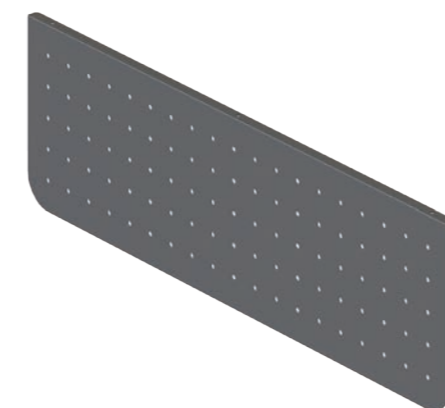
ARCH PERFORATED MODESTY PANEL

Specifications:

PSM1000	1000W x 200 x 300H
PSM1300	1300W x 200 x 300H
PSM1600	1600W x 200 x 300H

Features:

- Provides privacy for workstations visible from the front
- Perforated for airflow and added style
- Use with Deluxe Infinity, Boost, and Halo workstations
- For use on single and corner workstations
- Attaches to the underside of table top
- Black or white powdercoat
- Available in three different sizes to suit 1200mm, 1500mm and 1800mm wide workstations
- 1.5mm steel gauge
- 10 year warranty



PSM1000 BL



PSM1300 WS



PSM1600 BL with B+1P1875 NO/BL



PSM1600 WS with B+1P1875 NW/WS



DISC BASE TABLES

ROUND DISC BASE COFFEE TABLE

Specifications:

CCT6 600 Diameter x 450H

NEW black E0 rated melamine tops available
Refer to Volume 20 Catalogue for product features

ROUND DISC BASE TABLE

Specifications:

CBT9 900 Diameter x 755H
CBT12 1200 Diameter x 755H

NEW black E0 rated melamine tops available
Refer to Volume 20 Catalogue for product features



CCT6 BLK/WS



CCT6 BLK/BL



CBT12 BLK/BL



CBT12 BLK/SS



ETERNITY

ETERNITY ROUND COFFEE TABLE

Specifications:

ECT-500 500 Diameter x 450H
ECT-600 600 Diameter x 450H
ECT900 900 Diameter x 450H

NEW black E0 rated melamine tops available
NEW size available: 500mm diameter coffee table*
Refer to Volume 20 Catalogue for product features

*500mm tables only available in Black, Natural White, or Natural Oak

ETERNITY ROUND TABLE

Specifications:

D-ERT9 900 Diameter x 730H
D-ERT12 1200 Diameter x 730H

NEW black E0 rated melamine tops available
Refer to Volume 20 Catalogue for product features



ECT600 BLK/WS



ECT500 BLK/BL



D-ERT12 BLK/BL



D-ERT12 BLK/WS





TTR900 BLK



BTTR900 BLK/BL-BK

TYPHOON

TYPHOON 4-STAR TABLE

Specifications:

TTR900 | BTTR900 900 Diameter x 750H
 TTR1200 | BTTR1200 1200 Diameter x 750H

NEW black E0 rated melamine tops available
NEW black powdercoat base available
 Refer to Volume 20 Catalogue for product features



TYPHOON FLIP TOP TABLE

Specifications:

TFT126 | BTFT126 1200W x 600D x 750H
 TFT1575 | BTFT1575 1500W x 750D x 750H
 TFT1875 | BTFT1875 1800W x 750D x 750H
 TFT2175 | BTFT2175 2100W x 750D x 750H

NEW black powdercoat base available
NEW sizes available: 1200mm and 2100mm* flip top tables
 Refer to Volume 20 Catalogue for product features

*2100mm tables only available in Natural White or Natural Oak



BTFT126 NO/BL-BK



BTFT2175 NW/BL-BK



TTR1575 C



BTTR1875 NW/BL-BK

TYPHOON

TYPHOON MEETING TABLE

Specifications:

TTR189 | BTTR189 1800W x 900D x 750H
 TTR1575 | BTTR1575 1500W x 750D x 750H
 TTR1875 | BTTR1875 1800W x 750D x 750H

NEW black powdercoat base available
NEW sizes available: 1500mm and 1800mm meeting tables
 Refer to Volume 20 Catalogue for product features

TYPHOON BOARDROOM TABLE

Specifications:

TTR2412 | BTTR2412 2400W x 1200D x 750H
 TTR3212 | BTTR3212 3200W x 1200D x 750H
 TTR4012 | BTTR4012 4000W x 1200D x 750H

NEW black powdercoat base available
NEW size available: 4000mm boardroom table*
 Refer to Volume 20 Catalogue for product features

*4000mm tables only available in Natural White or Natural Oak



BTTR4012 NO/BL-BK





SHARP
OFFICE

**CONTACT YOUR LOCAL
SHARP OFFICE FURNITURE
EXPERT TO LEARN MORE**

02 4962 1313

info@sharpoffice.com.au

**89-93 Lambton Rd
Broadmeadow
NSW 2292**